



ASKING PRICE

£900,000

Bellenden Road

London, SE15 5BH

**GARETH
JAMES**

PROPERTY SUMMARY

A charming Victorian three-bedroom terraced house situated on the highly sought-after Bellenden Road, in the heart of Peckham's vibrant Bellenden Village. Offering flexible accommodation arranged over three floors, this attractive home provides versatile living space ideally suited to modern family life and home working.

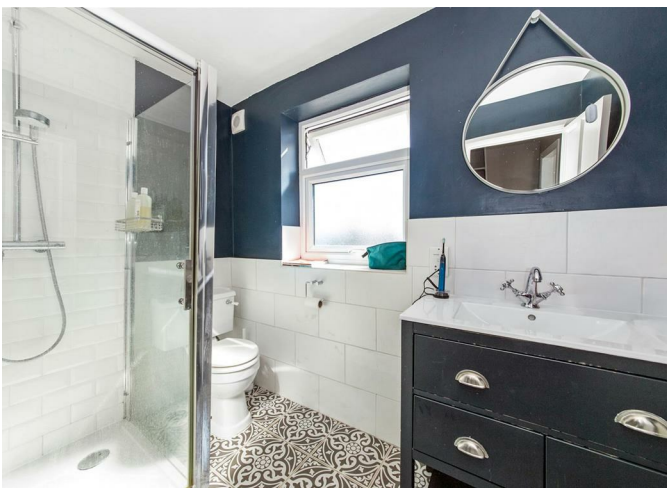
3



2



1

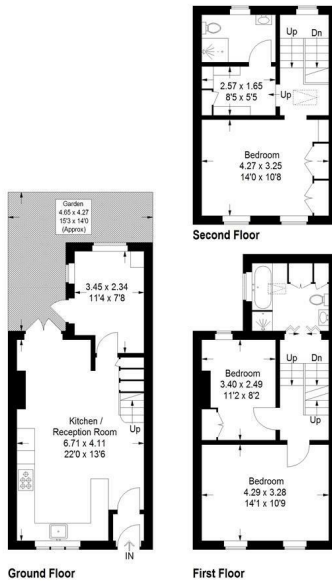






Bellenden Road, SE15

Approximate Gross Internal Area
102.1 sq m / 1099 sq ft



This plan is for layout guidance only. Not drawn to scale unless stated. Windows and door openings are approximate. Whilst every care is taken in the preparation of this plan, please check all dimensions, shapes and compass bearings before making any decisions reliant upon them. (ID1313307)



Energy Efficiency Rating		
	Current	Potential
<i>Very energy efficient - lower running costs</i>		
(92 plus) A		
(81-91) B		
(69-80) C		
(55-68) D		
(39-54) E		
(21-38) F		
(1-20) G		
<i>Not energy efficient - higher running costs</i>		
England & Wales	EU Directive 2002/91/EC	

Agents Note: Whilst every care has been taken to prepare these particulars, they are for guidance purposes only. All measurements are approximate and are for general guidance purposes only and whilst every care has been taken to ensure their accuracy, they should not be relied upon and potential buyers/tenants are advised to recheck the measurements

<h1>GARETH JAMES</h1>	<p>OFFICE ADDRESS 129 Bellenden Road London SE15 4QY</p>	<p>OFFICE DETAILS 02077324330 sales@garethjames.com https://www.garethjames.com/</p>
-----------------------	-----------------------------------------------------------------------------	----------------------------------------------------------------------------------------------------------------------------------------------------